

## G500 GPS firmware update Instruction Guide

### Cause:

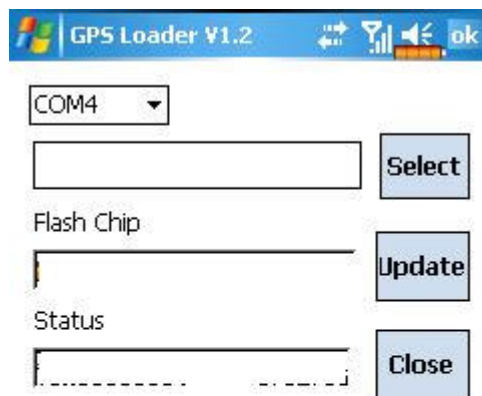
A number of customers complain that when using the G500 FM tuner, the FM reception can only be fixed for a few seconds. This firmware update modified the Reception Signal Strength and thus improving the FM reception.

### File requirement:

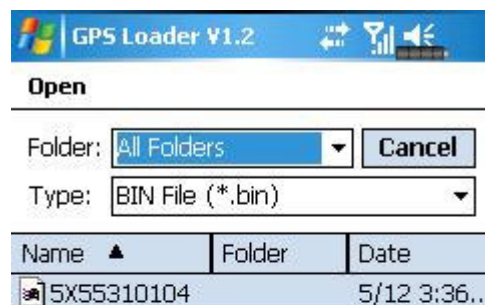
- G500\_GPS\_LoaderV1.2.exe (update tool)
- 5X55320201.bin (GPS firmware)

### Update instruction:

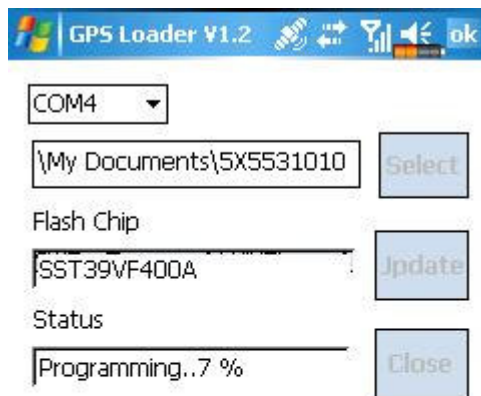
- Ensure that the G500 is properly connected to your PC via the USB cable and and that the Activesync logo in the system tray is in GREEN.
- Copy both G500\_GPS\_LoaderV1.2.exe and 5X55320201.bin into My documents folder of G500 (MUST be copied into this folder).
- Run G500\_GPS\_LoaderV1.2.exe and an interface would shown as below



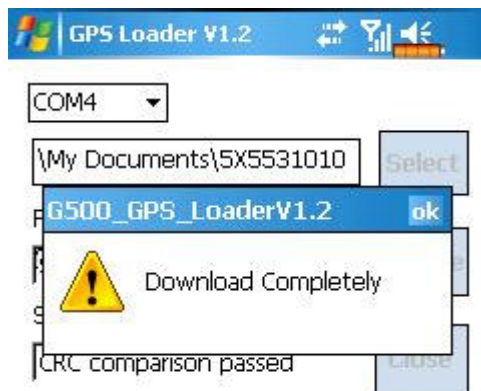
- Tap the Select icon and choose the GPS firmware file as below shown



- Tap the GPS firmware file and tap Update to begin the update process



- Wait until the update status reaches 100% and a dialogue box will appear as below



- Finally, tap “OK” to complete GPS firmware updating.